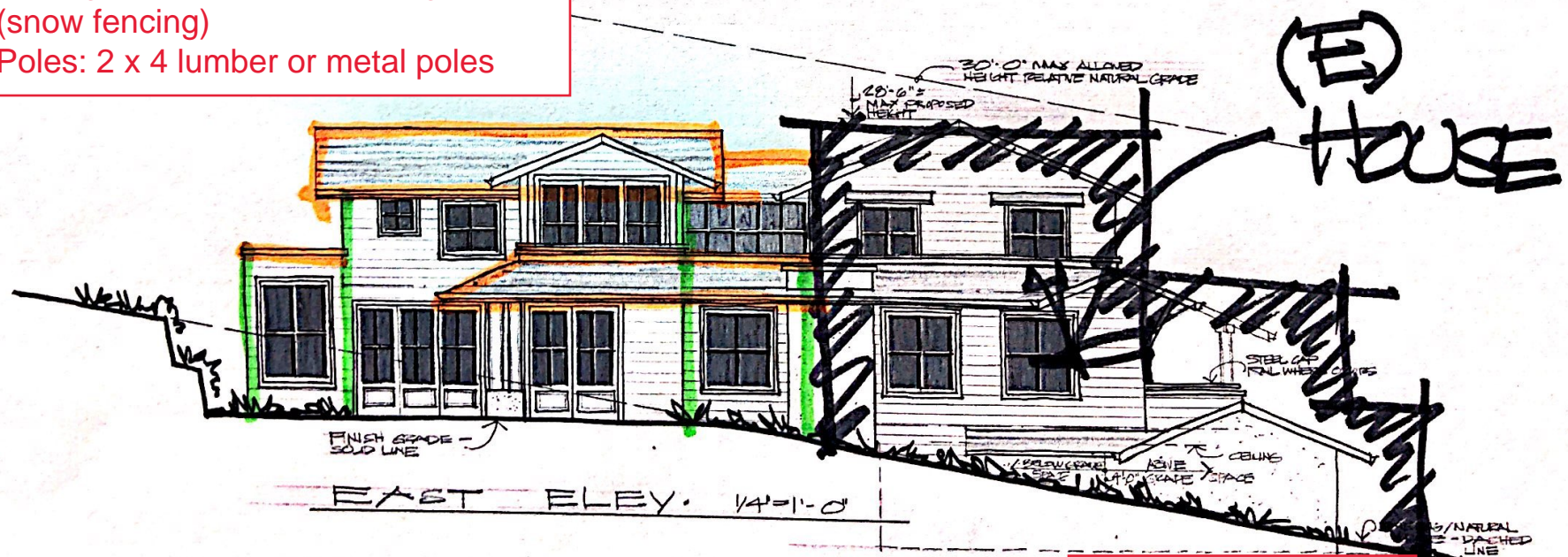


Provide 5' measurements on one of the poles on each elevation.
 Materials:
 Netting: 24" wide plastic orange mesh (snow fencing)
 Poles: 2 x 4 lumber or metal poles



APPROVED

Seth Madlin

Story Pole Only

06/22/20

Print date: 4/6/20
 2/22/20
 1/10/20
 JAY PLETT
 ARCHITECT
 408.354.4551
 jay@plett-arc.com
 www.plett-arc.com
 213 Bean Avenue
 Los Gatos, CA 95030

THE DE MATTEI RED
 101 BROADWAY
 LOS GATOS CA

Revised by: JAY PLETT
 The document contains material as an extension of service by the architect JAY PLETT. These drawings and/or to be used and/or submitted without the permission of the architect in writing. The design remains the sole property of JAY PLETT.

Revisions:

PRELIM/HPC
 PLAN OK
 PRICING SET
 CONST. SET

Scale:
 Date:
 Sheet
 A-0

EXHIBIT 14

Story Pole Only
06/22/20

Print date :
4/6/20
1/7/20
JAY PLETT

408.354.4551
jay@piett-arc.com
www.piett-arc.com
213 Bean Avenue
Los Gatos, CA 95030

THE DE MATTEI RED
101 BROADWAY
LOS ANGELES CA

Copyright (c) JAY PLETT

The document contains
original copyrighted
material as an employee
of services by the
inventor JAY PLETT.
These documents and not
be altered and/or
distributed without the
permission of the designer
in writing. The design
remains the sole
property of JAY PLETT

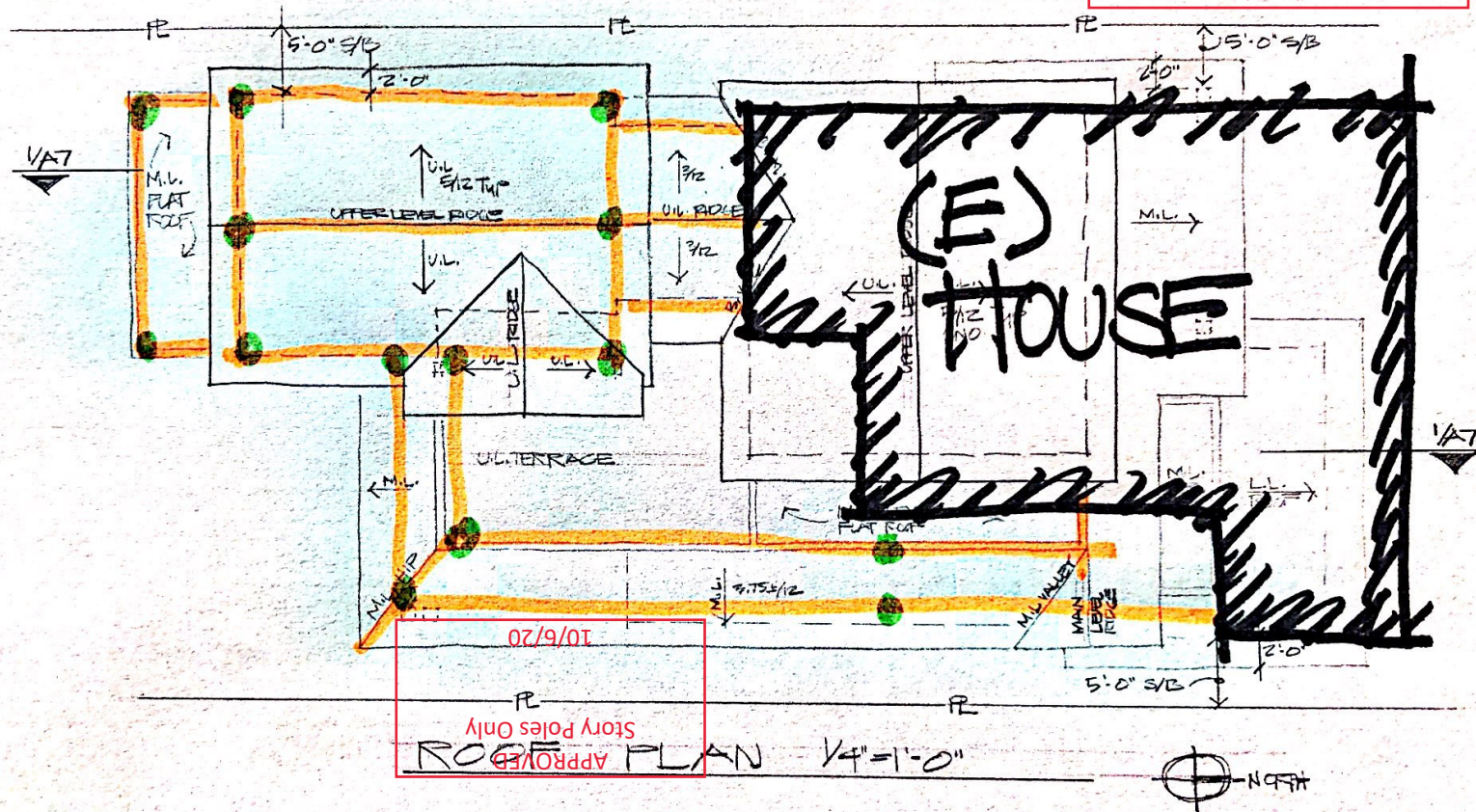
Revisions : -

PRELIM. 100	X
PLAN CR	
PRICING SET	
CONST. SET	

State: _____
Date: _____

Sheet

A-5



NETTING

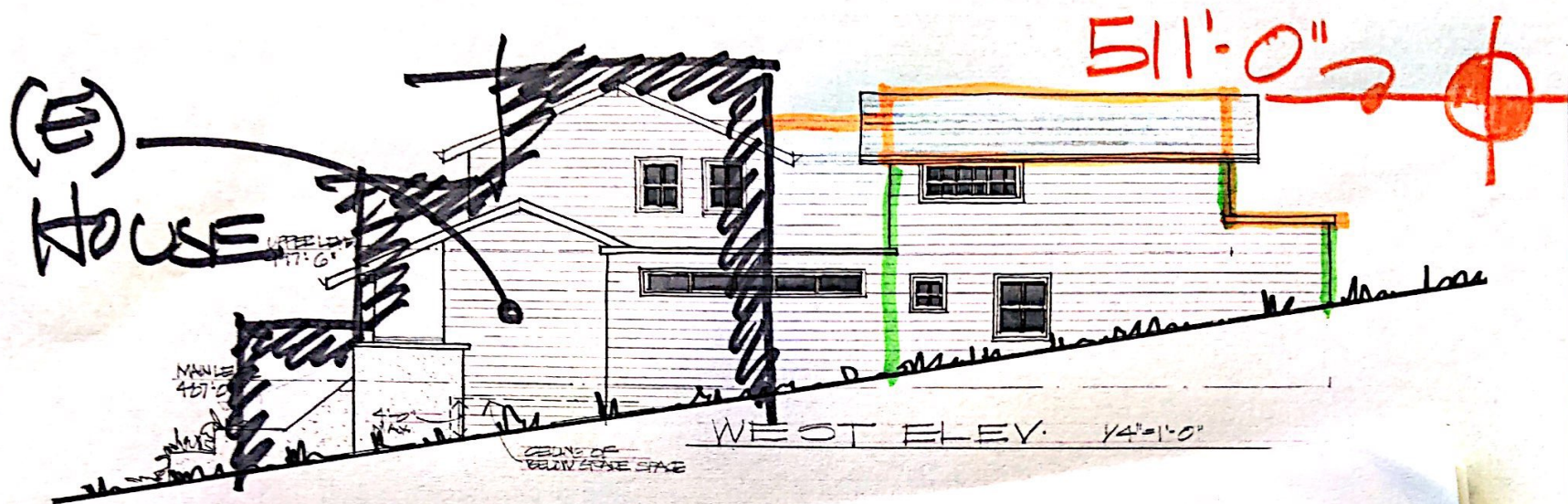
poles

Provide 5' measurements on one of the poles on each elevation.

Materials:

Netting: 24" wide plastic orange mesh (snow fencing)

Poles: 2 x 4 lumber or metal poles



APPROVED
Seethal
 Story Pole Only
 06/22/20

Provide 5' measurements on one of the poles on each elevation.
 Materials:
 Netting: 24" wide plastic orange mesh (snow fencing)
 Poles: 2 x 4 lumber or metal poles

Print date: 4/15/20
 JAY PLETT
 408 354 4551
 jay@plett-art.com
 www.plett-art.com
 213 Basin Avenue
 Los Gatos, CA 95030

THE DE MATTEI RES
 101 BROADWAY
 LOS GATOS, CA

copyright (c) JAY PLETT

The document contains original copyrighted material as an instrument of service by the architect JAY PLETT. These documents shall not be utilized and/or distributed without the permission of the architect in writing. The design remains the sole property of JAY PLETT.

Revisions:

PRELIM/HPC
 PLAN CK
 PRICING SET
 CONST SET

Sheet:
 A-7

***This Page
Intentionally
Left Blank***